



RANDOX

RX series analyser overview

Excellence in clinical chemistry testing



Expect innovation, accept no imitation

Patient care is the primary focus of clinical chemistry testing and Randox has developed the RX series of clinical chemistry analysers for high quality semi-automated and fully automated testing. With placements in over 120 countries worldwide, the RX series continues to revolutionise a variety of laboratory types including:

- Clinical Laboratories
- Hospital Laboratories
- University & Educational Institutes
- Research laboratories
- Veterinary laboratories
- Food & wine laboratories

The RX series combines robust hardware and intuitive software with the world leading RX series test menu, including **routine chemistries, specific proteins, lipids, therapeutic drugs, drugs of abuse, antioxidants and diabetes testing**

Renowned for quality and reliability, the RX series has one of the most extensive dedicated clinical chemistry test menus on the market guaranteeing real cost savings through consolidation of routine and specialised tests onto a single platform. This extensive dedicated test menu of high quality reagents guarantees excellence in patient care ensuring unrivalled precision and accuracy reducing costly test re-runs or misdiagnosis and offering complete confidence in results.



RX monza

The RX monza is a compact semi-automated analyser with astonishing functionality, offering 192 channels. The RX monza will offer exciting opportunities for both routine and specialised testing.



RX monaco

Offering a cost effective solution for low to mid volume clinical chemistry testing, the RX monaco is a fully automated random access clinical analyser capable of carrying out 170 tests per hour. It provides unrivalled performance for low to mid volume testing.



RX daytona+

Superior performance for mid volume laboratories. The RX daytona+ is capable of running 270 photometric tests per hour or 450 tests per hour including ISEs.



RX imola

Efficiency for medium sized laboratories. The RX imola is a random access benchtop analyser with a throughput of 400 photometric tests per hour or 560 tests per hour including ISEs.

A high performance semi-automated clinical chemistry analyser

The RX monza offers astonishing functionality and is capable of laboratory standard, high precision results at a competitive cost per test.

The flexibility of pre-programmable channels and an extensive RX series test menu ensures complete patient profiling. Simple step by step on-board instructions and easy to follow reports ensure the RX monza provides a consistent user performance and produces results you can trust.



Main Features of the RX monza

- Extensive dedicated test menu
- 192 channels including 113 open channels
- Space saving, compact bench-top design
- Comprehensive test menu of 79 validated pre-programmed assays
- Low reagent volume
- Built-in Quality Control facility ensuring accuracy and reliability of results
- Automatic storage of up to 1000 results
- Comes with a one year warranty as standard

Flexibility

- Quartz Flow Cell, supplied with the instrument removes the requirement for additional consumables
- Triple cuvette system- Temperature controlled flow cell and standard semi-micro or micro cuvette and coagulation tubes
- On-board thermal printer eliminates the need for external equipment
- Optional cuvette incubator available

Extensive dedicated Test Menu

- Clinical chemistry, antioxidants, wine, food, nutrition, sports, cosmetics, veterinary and coagulation assays
- Analysis of a wide range of analyses from as little as 5µl of sample

Optimum Performance

- Viewing reaction curves in 'real time' develops understanding of how the chemistry is progressing
- Ability to plot Levey-Jennings Charts
- Large, adjustable backlit LCD screen
- On-board checks help minimise potential for operator errors
- Validated reagents provide results comparable to an automated instrument

Excellent Functionality

- Running the analyser in absorbance mode allows user to draw own calibration and reaction curves manually
- Ability to perform different types of calibration: Linear, Point-to-Point, Spline, Log-Logit & K-Factor
- Ability to register 3 levels of Quality Control
- User-defined reference ranges
- Minimum reaction volume of 500µl results in a low cost per test
- 3 levels of password protection enabling different levels of access.

Robust, Reliable, Easy-to-Use

- Minimal daily maintenance required
- Simple step-by-step on board instructions.

RX monza Cuvette Incubator

This dry block thermostat for incubating cuvettes has been optimised for use with RX monza assays and is the ideal supplement to the RX monza analyser.



RX monza

Catalogue Code:

RX2901 RX monza analyser

M701-484 RX monza cuvette incubator

RX2908 Coagulation start up kit



Aspiration System



On-board Printer

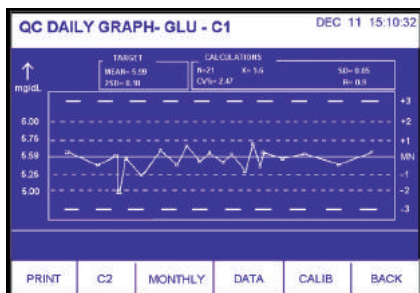


32 direct access keys for 79 dedicated parameters

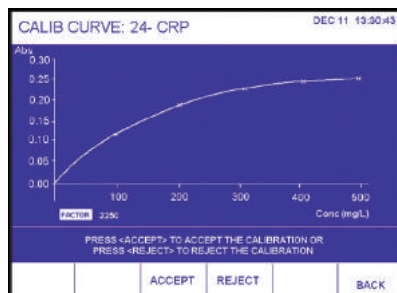


Easy access to all user needs from one home screen

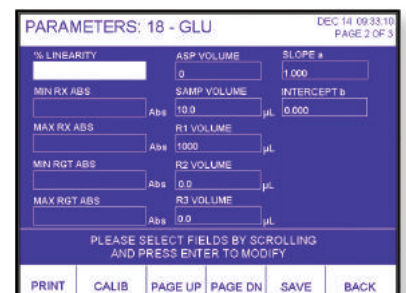
Software



Quality Control



Calibration Curve



Parameter Screen

"The Randox Monza has rapidly become one of our most heavily utilised pieces of equipment! The ease of use, minimal sample volumes and diversity of assays allows the Monza to suit all our needs.

Neil Willmore, Laboratory Manager & Camilla Holland, Senior Technical Officer
Sport, Health & Exercise Dept. University of Hertfordshire, UK

A compact fully automated solution for high clinical chemistry testing

The RX monaco is a fully automated, cost effective solution for low to mid volume clinical chemistry testing offering the ultimate in convenience, performance and confidence. The RX series test menu allows for complete consolidation of routine and specialised testing onto one efficient, easy to use platform.



Main Features of the RX monaco

- 170 photometric tests per hour
- Minimum reaction volume 150µl
- 120 semi-permanent cuvettes
- Grating spectrophotometry system generating 12 wavelengths ranging from 340-800nm 340, 380, 405, 450, 480, 505, 546, 570, 600, 660, 700, 800nm
- Low water consumption of 5.5 litres per hour at maximum throughput
- Sample Dead of Volume 100µl
- Easy to use Windows® based software
- One year warranty as standard plus unrivalled technical support from Randox

Flexibility

- Available as a bench top or floor standing model
- Cooled reagent and sample carousel (removable) ensures reagent, controls and calibrators can be stored on-board the analyser without compromising stability
- User defined QC multi point rules
- Calibration options include 1 point, 2 point, multi-point & non-linearity method
- QC history can be viewed
- 3 levels of password protection available enabling different levels of access.

Extensive Dedicated Test Menu

- Extensive test menu covering routine chemistries, specific proteins, lipids, therapeutic drugs, drugs of abuse, antioxidants, diabetes and veterinary testing.
- Capable of analysing a variety of sample types:
 - Serum
 - Plasma
 - Urine
 - Cerebrospinal Fluid
 - Supernatants
 - Ascites

Optimum Performance

- Low minimum reaction volume of 150µl improves cost-effectiveness and reduces waste
- Cuvette check function ensures only clean and viable reaction vessels are reused
- Built in inventory management system automatically reports remaining reagent volume
- Sample volume of just 3 - 35µl (0.1µl increments)
- Low reagent volume of 10 - 350µl
- Reaction Volume 150 - 550µl
- Single reagent and sample pipette with digital liquid level detection and collision protection

Excellent Functionality

- User friendly Microsoft windows® based software
- Generation of Levey-Jennings charts, calibration curves and QC statistics

Robust, Reliable, Easy-to-Use

- Low maintenance requirements
- Independent stirring system automatically rinsed with purified water to reduce carryover
- Online help guide available to assist user with analyser functions, troubleshooting and maintenance queries
- Integrated barcode readers for reagent and sample identification

Catalogue Code:

RX5000

RX monaco analyser (benchtop)

RX5001

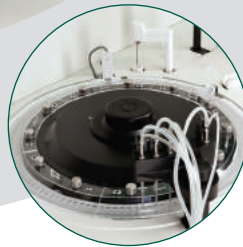
RX monaco analyser with stand



12 stage washing system
Includes acid, alkali and
pure water wash steps



Shared reagent and sample
carousel with 66 user
defined positions

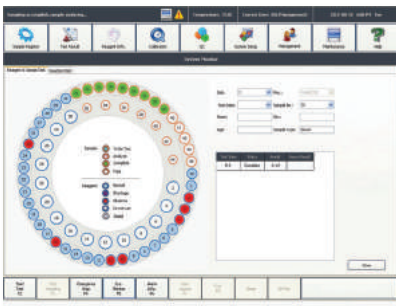


Reaction System 120
reusable optical plastic
cuvettes

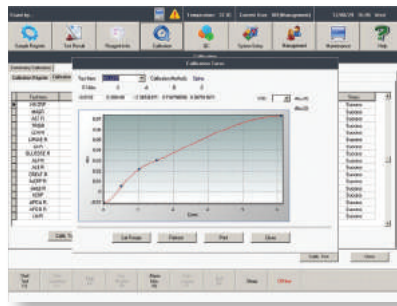


Single reagent and sample
pipette with liquid level
detection and collision
protection

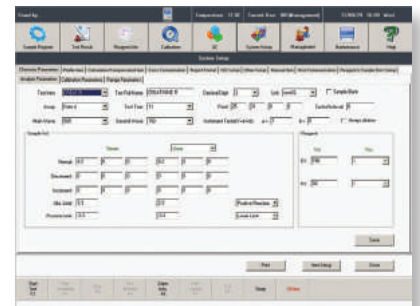
Software



Run Monitor Screen



Calibration Screen



Parameter Screen

"This highly versatile, high-end product offers a wide range of routine and specialised tests at great value for money, and comes with excellent after sale service."

Keisha Terrier-Gallimore, Managing Director, Mediplus Diagnostics Laboratory, May Pen, Jamaica

A fully automated clinical chemistry analyser with unrivalled performance.

The RX daytona+ is a fully automated, random access, bench top analyser. Its comprehensive and flexible test menu allows the consolidation of a wide range of tests including routine chemistries, specific proteins, therapeutic drugs and drugs of abuse on one easy to use platform.

The RX daytona+ is ideal for use in medium sized laboratories or as a back-up analyser in the larger laboratory.



Main Features of the RX daytona+

- 270 photometric tests per hour
- Optional ISE unit which enables a total throughput of 450 tests per hour
- Minimum reaction volume 100µl
- 72 semi-permanent cuvettes on-board with cuvette check function and 12 stage washing
- 12 wavelength options: 340, 380, 415, 450, 510, 546, 570, 600, 660, 700, 750 and 800nm
- Low water consumption of 5 litres per hour at maximum throughput
- Standard and Paediatric sample cups can be used on-board
- Sample Dead Volume 100µl / 50µl (paediatric)
- One year warranty as standard plus unrivalled technical support from Randox.

Flexibility

- Cooled reagent carousel ensures reagents can be stored on-board the analyser without compromising stability
- Reagent and sample carousels are removable
- Option to use standard sample cups or paediatric cups for small sample volumes
- Calibration options include: Factor; Linear; Point to point, Log-logit, Exponential, Spline and Spline 2
- QC history can be viewed
- 3 levels of password protection available enabling different levels of access.

Extensive Dedicated Test Menu

- Extensive test menu covering routine chemistries, specific proteins, lipids, therapeutic drugs, drugs of abuse, antioxidants, diabetes and veterinary testing.
- Capable of analysing a variety of sample types:
 - Serum
 - Plasma
 - Urine
 - Cerebrospinal Fluid
 - Supernatants
 - Ascites

Optimum Performance

- Cuvette check function ensures only clean and viable reaction vessels are reused
- Built in inventory management system automatically reports remaining reagent volume
- Separate sample and reagent pipettes including liquid level sensors, crash protection and clot detection
- Dual 5 speed stirrers optimised for each assay ensuring better performance
- Low reagent volume - R1: 20 - 250µl (1µl increments) R2: 20 - 180µl (1µl increments)
- Sample volume of just 1.5µl (0.1µl increments)
- Reaction Volume 100 - 350µl

Excellent Functionality

- User friendly Microsoft windows® based software.
- Generation of Levey-Jennings charts, calibration curves and QC statistics

Robust, Reliable, Easy-to-Use

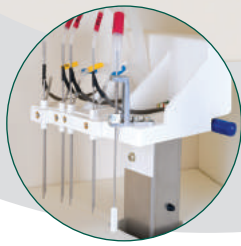
- Minimal maintenance required
- Integrated barcode readers for reagent and sample identification

Catalogue Code:

RX4041	RX daytona+ analyser without ISE
RX4040	RX daytona+ analyser with ISE



Versatile reagent carousel with 50 cooled positions



12 stage washing process

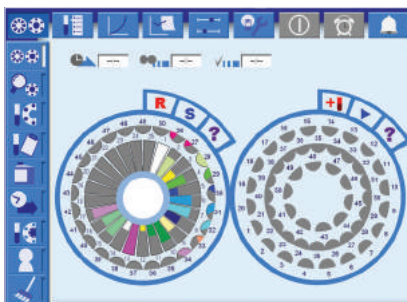


Universal sample carousel with 40 positions and 10 control/ calibrator positions



72 semi-permanent reaction cuvettes with a reaction volume of 100µl 350µl

Software



Run Monitor Screen



Calibration Screen

Reagent Name	Reagent Type	Lot	Expiry	Stock	Unit	Reorder Level
ELISA	ELISA	101	2015-12-31	100	Box	50
ELISA	ELISA	102	2015-12-31	100	Box	50
ELISA	ELISA	103	2015-12-31	100	Box	50
ELISA	ELISA	104	2015-12-31	100	Box	50
ELISA	ELISA	105	2015-12-31	100	Box	50
ELISA	ELISA	106	2015-12-31	100	Box	50
ELISA	ELISA	107	2015-12-31	100	Box	50
ELISA	ELISA	108	2015-12-31	100	Box	50
ELISA	ELISA	109	2015-12-31	100	Box	50
ELISA	ELISA	110	2015-12-31	100	Box	50

Inventory Screen

"This one of the best user friendly, error free instruments. I will rate it as a pioneer in the field of diagnostics."
Debadatta Sahoo, Microbiologist, Kalinga Institute of Medical Sciences, Bhubaneswar, India

Rapid, comprehensive clinical chemistry testing on a superior fully automated analyser

The RX imola is a cost effective system that delivers consistent high quality results. Capable of handling the workload of a medium to high throughput laboratory the RX imola provides rapid, comprehensive testing on a small footprint analyser.



Main Features of the RX imola

- 400 photometric tests per hour
- 560 tests per hour including ISE
- 90 permanent Pyrex® cuvettes, with 8 stage washing guaranteed for 5 years
- 12 wavelength options: 340, 380, 415, 450, 510, 546, 570, 600, 660, 700, 750 and 800 nm
- Water consumption of 18 litres per hour
- Standard and Paediatric sample cups can be used on-board
- Paediatric sample cup and tube Sample cup with lid 46mm x 10.8mm Tube 85mm x 13mm
- Sample Dead Volume 100µl / 50µl (paediatric)
- One year warranty as standard plus unrivaled technical support from Randox

Flexibility

- 60 cooled reagent positions reagent carousel ensures reagents can be stored on-board the analyser without compromising stability
- 20 cooled positions available for controls and calibrators
- Reagent and sample Carousels are removable
- Calibration options include: Factor; Linear; 2 point, point to point, spline, log-logit and exponential, per test
- QC history can be viewed
- 3 levels of password protection available enabling different levels of access

Extensive Dedicated Test Menu

- Extensive test menu covering routine chemistries, specific proteins, lipids, therapeutic drugs, drugs of abuse, antioxidants, diabetes and veterinary testing.
- Capable of analysing a variety of sample types
 - Serum
 - Plasma
 - Urine
 - Cerebrospinal Fluid
 - Supernatants
 - Ascites

Optimum Performance

- Long life span cuvettes of approx. 5 years
- Built in inventory management system to monitor reagent volumes and remaining number of tests
- Minimum reaction volume 150µl
- Dual micro-pipettes with liquid level sensors, clot and bubble detection
- Dual 5 speed stirrers optimised for each assay ensuring better performance
- Capable of a medium to high throughput
- Low reagent volume – R1: 150-350µl (1µl increments) R2: 20-250µl (1µl increments)
- Sample volume of just 2-35µl (0.1µl increments)

Excellent Functionality

- User friendly Microsoft windows® based software.
- Generation of Levey-Jennings charts, calibration curves and QC statistics

Robust, Reliable, Easy-to-Use

- Daily maintenance takes less than 5 minutes
- Integrated bar-code readers for reagent and sample management

Catalogue Code:

RX4900

RX imola analyser (comes with ISE as standard)

RX imola



Versatile reagent carousel with 60 cooled positions



8 stage washing system

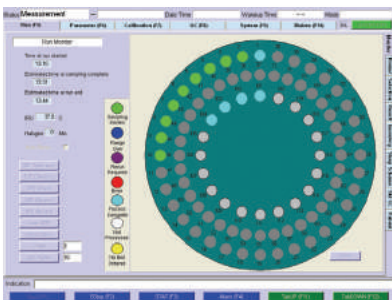


Universal sample carousel with 72 positions

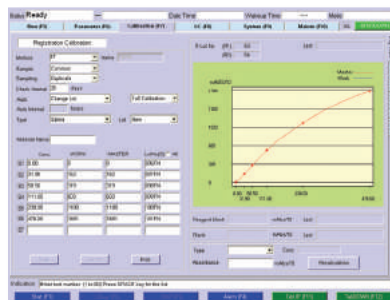


Dual 5 speed stirrer

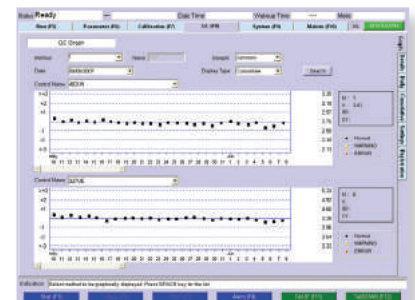
Software



Run Monitor Screen



Calibration Screen



Quality Control Screen

“The RX imola is user friendly, fast and offers the best quality reagents. We are very pleased to work with Randox and the RX Imola.”
Dr Adriano Puccilo, Laboratory Manager, Laboratório de Patologia Santa Terezinha, Brazil



CLINICAL

TEST MENU

AUTOIMMUNE:

Complement Component 3
Complement Component 4
CRP
CRP Full Range (0.3-160mg/l)
CRP High Sensitivity
IgA
IgE
IgG
IgM
Rheumatoid Factor

BASIC METABOLIC PROFILE:

Calcium
CO₂ Total
Chloride (Direct & Non-direct)
Creatinine (Enzymatic)
Creatinine (Jaffe)
Glucose (GOD-PAP)
Glucose (Hexokinase)
Potassium
Sodium
Urea

BONE PROFILE:

Alkaline Phosphatase (AMP)
Alkaline Phosphatase (DEA)
Calcium
Phosphorus (Inorganic)
Total Protein

CARDIAC:

Cholesterol
CK-MB
CK-NAC
CRP
CRP Full Range (0.3-160mg/l)
CRP High Sensitivity
Digoxin
HDL Cholesterol (Direct)
H-FABP
Homocysteine
LDL Cholesterol (Direct)
Lipoprotein (a)
Myoglobin
sLDL
Triglycerides
TxB Cardio

COMPREHENSIVE METABOLIC PROFILE:

Albumin
Alkaline Phosphatase (AMP)
Alkaline Phosphatase (DEA)
ALT (GPT)
AST (GOT)
Bilirubin (Direct)

Bilirubin (Total)
Calcium
Chloride (Direct & Non-direct)
CO₂ Total
Creatinine (Enzymatic)
Creatinine (Jaffe)
Glucose (GOD-PAP)
Glucose (Hexokinase)
Lactate
Potassium (Direct & Non-direct)
Sodium (Direct & Non-direct)
Total Protein
Urea

DIABETES:

Adiponectin
Cholesterol
Creatinine (Enzymatic)
Creatinine (Jaffe)
Cystatin C
D-3 Hydroxybutyrate (Ranbut)
Fructosamine
Glucose (GOD-PAP)
Glucose (Hexokinase)
Glycerol
HbA1c/Hb
HDL Cholesterol (Direct)
LDL Cholesterol (Direct)
Microalbumin
NEFA (Non-Esterified Fatty Acids)
Total Protein
Triglycerides
Urinary Protein

ELECTROLYTES:

Calcium
Chloride (Non-direct)
CO₂ Total
Lithium
Magnesium
Potassium (Non-direct)
Sodium (Non-direct)

HAEMOLYTIC

ANAEMIA:

G-6-PDH
Haptoglobin
Lactate Dehydrogenase (L-P)
Lactate Dehydrogenase (P-L)

HEPATIC FUNCTION:

Albumin
Aldolase
Alkaline Phosphatase (AMP)
Alkaline Phosphatase (DEA)
Alpha-I Antitrypsin
ALT (GPT)
Ammonia
AST (GOT)

Bile Acids
Bilirubin (Direct)
Bilirubin (Total)
Cholinesterase (Butyryl)
Complement Component 3
Complement Component 4
Direct Bilirubin
Gamma GT
GLDH
Glycerol
Haptoglobin
IgA
IgG
IgM
Iron (UIBC)
LAP
LDH
Total Protein
Transferrin
Transthyretin (Prealbumin)

INFLAMMATION AND INFECTION:

Alpha-I Acid Glycoprotein
ASO
CRP
Lactate
Rheumatoid Factor

LIPIDS:

Apolipoprotein A-I
Apolipoprotein AII
Apolipoprotein B
Apolipoprotein CII
Apolipoprotein CIII
Apolipoprotein E
Cholesterol
HDL Cholesterol (Direct)
LDL Cholesterol (Direct)
Lipoprotein (a)
sLDL
Triglycerides

NEONATAL

SCREENING:

Alpha-I Antitrypsin
CRP
CRP Full Range (0.3-160mg/l)
CRP High Sensitivity
IgE
Transthyretin (Prealbumin)

NEUROLOGICAL DISORDERS (CSF):

IgA
IgG
IgM

NUTRITIONAL STATUS:

Albumin
Copper
Ferritin
Iron
Lipase
Magnesium
Potassium (Direct & Non-direct)
TIBC
Transferrin
Transthyretin (Prealbumin)
Zinc

PANCREATIC FUNCTION:

Amylase
Glucose (GOD-PAP)
Glucose (Hexokinase)
Lactate Dehydrogenase (L-P)
Lactate Dehydrogenase (P-L)
Lipase
Pancreatic Amylase

RENAL FUNCTION:

Albumin
Ammonia
Beta-2 Microglobulin
Calcium
Chloride (Direct & Non-direct)
Creatinine (Enzymatic)
Creatinine (Jaffe)
Cystatin C
Glucose (GOD-PAP)
Glucose (Hexokinase)
HbA1c/Hb
IgG
Lactate Dehydrogenase (L-P)
Lactate Dehydrogenase (P-L)
Magnesium
Microalbumin
Potassium
Phosphorus (Inorganic)
Sodium (Direct & Non-direct)
Urinary Protein
Urea
Uric Acid



VETERINARY

Albumin
Alkaline Phosphatase (AMP)
Alkaline Phosphatase (DEA)
ALT (GPT)
Aldolase
Ammonia
Amylase
AST (GOT)
Bile acids
Bilirubin (Direct)
Bilirubin (Total)
Calcium
Chloride (Direct & Non-direct)

Cholesterol
Cholinesterase (Butyryl)
CK-NAC
CO₂ Total
Copper
Creatinine (Enzymatic)
Creatinine (Jaffe)
CRP (Canine)
D-3 Hydroxybutyrate (Ranbut)
Fructosamine
Gamma-GT
GLDH
Glucose (GOD-PAP)

Glucose (Hexokinase)
Glycerol
HDL Cholesterol (Direct)
Iron (UIBC)
Lactate
Lactate Dehydrogenase (L-P)
Lactate Dehydrogenase (P-L)
LDL Cholesterol (Direct)
Lipase
Magnesium
NEFA (Non-esterified fatty acids)
Phosphorus (Inorganic)
Potassium

Ransel (Glutathione peroxidase)
Ransod (Superoxide dismutase)
Sodium
Total Protein
Triglycerides
Urea
Uric Acid
Urinary protein
Zinc



TOXICOLOGY

* Not available on the RX monaco.

DRUGS OF ABUSE:

Barbiturates
Benzodiazepines
Cannabinoids
Cocaine metabolite
Ecstasy

EDDP (Methadone metabolite)
Ethanol
Methadone
Methamphetamines
Opiates

THERAPEUTIC DRUGS:

Acetaminophen
Carbamazepine
Digoxin
Gentamicin
Lithium

Phenobarbital
Phenytoin
Salicylate
Theophylline
Valproic Acid



PROTEIN

SPECIFIC PROTEINS:

Alpha-1 Antitrypsin
Alpha-1 Acid Glycoprotein
Apolipoprotein A-I
Apolipoprotein AII
Apolipoprotein B
Apolipoprotein CII
Apolipoprotein CIII
Apolipoprotein E

ASO
Beta-2 Microglobulin
Ceruloplasmin
Complement Component 3
Complement Component 4
CRP
CRP Full Range (0.3-160mg/l)
CRP High Sensitivity

Cystatin C
Ferritin
Fructosamine
Haptoglobin
HbA1c/Hb
IgA
IgE
IgG

IgM
Lipoprotein (a)
Microalbumin
Myoglobin
Rheumatoid Factor
Transthyretin (Prealbumin)
Transferrin



RESEARCH

ANTIOXIDANTS:

Albumin
Bilirubin
Ferritin
Glutathione Reductase
Ransel (Glutathione Peroxidase)
Ransod (Superoxide Dismutase)
TIBC
Total Antioxidant Status

Transferrin
Uric Acid

BIOTECHNOLOGY:

Glutamate
Glutamine

SPECIALITY:

Acid phosphatase



FOOD AND WINE TESTING

Acetic acid
Ammonia
Copper
Ethanol
Free Sulphite (FSO₂)
Glucose/fructose
Lactic acid
Malic acid
Primary Amino Nitrogen (NOPA)

Potassium
Total Antioxidant Status
Total Sulphite (Total SO₂)



COAGULATION

* RX monza only

Activated Partial Thrombin Time (APTT)

Antithrombin (AT III)

Prothrombin Time (PT)

Thrombin Time (TT)



Acetic Acid*
Acid phosphatase
Activated Partial Thrombin Time (APTT)
Albumin
Aldolase
Alkaline Phosphatase (AMP)
Alkaline Phosphatase (DEA)
ALT (GPT)
Ammonia*
Amylase
Antithrombin (ATIII)
Apolipoprotein A-I
Apolipoprotein B
ASO
AST (GOT)
Barbiturates
Benzodiazepines
Beta-2 Microglobulin
Bile Acids
Bilirubin (Direct)
Bilirubin (Total)
Calcium
Canine CRP
Cannabinoids
Carbamazepine
Ceruloplasmin
Chloride (Direct & Non-Direct)
Cholesterol
Cholinesterase (Butyryl)
CK-MB
CK-NAC
CO2 Total
Copper
Creatinine (Jaffe)
CRP
CRP (Canine)
Cystatin C
D-3 Hydroxybutyrate (Ranbut)
Ethanol*
Free Sulphite (FSO₂)*
Total Sulphite (TSO₂)*
G-6-PDH
Gamma GT
GLDH (Glutamate Dehydrogenase)
Glucose (GOD-PAP)

Glucose (Hexokinase)
Glucose/Fructose*
Glutathione Peroxidase (Ransel)
Glutathione Reductase
Glycerol
Haemaglobin
HbA1c/Hb
HDL Cholesterol (Direct)
IgA
IgG
Iron
Lactate
Lactic acid*
Lactate Dehydrogenase (P-L)
Lactate Dehydrogenase (L-P)
LDL Cholesterol (Direct)
Lipase
Magnesium
Malic Acid*
Microalbumin
NEFA (Non-Esterified Fatty Acids)
Phosphorus (Inorganic)
Potassium
Primary Amino Nitrogen (NOPA)*
Prothrombin Time (PT)
Sodium
Superoxide Dismutase (Ransod)
Thrombin Time (TT)
Total Antioxidant Status*
Total Protein
Transferrin
Triglycerides
Urea
Uric Acid
Urinary Protein
Zinc

*Suitable for wine or food testing only



Acetaminophen
Acetic Acid*
Acid phosphatase
Adiponectin
Albumin
Aldolase
Alkaline Phosphatase (AMP)
Alkaline Phosphatase (DEA)
Alpha-1 Acid Glycoprotein
Alpha-1 Antitrypsin
ALT (GPT)
Ammonia
Amylase
Apolipoprotein A-I
Apolipoprotein AII
Apolipoprotein B
Apolipoprotein CII
Apolipoprotein CIII
Apolipoprotein E
ASO
AST (GOT)
Barbiturates
Benzodiazepines
Beta-2 Microglobulin
Bile Acids
Bilirubin (Direct)
Bilirubin (Total)
Calcium
Cannabinoids
Carbamazepine
Ceruloplasmin
Chloride (Direct & Non-Direct)
Cholesterol
Cholinesterase (Butyryl)
CK-MB
CK-NAC
CO2 Total
Cocaine metabolite
Complement Component 3
Complement Component 4
Copper
Creatinine (Enzymatic)
Creatinine (Jaffe)
CRP
CRP (Canine)

CRP Full Range (0.3-160mg/l)
CRP High Sensitivity
Cystatin C
D-3 Hydroxybutyrate (Ranbut)
Digoxin
Ecstasy
EDDP (Methadone Metabolite)
Ethanol
Ferritin
Fructosamine
G-6-PDH
Gamma GT
Gentamicin
GLDH
Glucose (GOD-PAP)
Glucose (Hexokinase)
Glucose/Fructose*
Glutamate
Glutamine
Glutathione Peroxidase (Ransel)
Glutathione Reductase
Glycerol
Haptoglobin
HbA1c/Hb
HDL Cholesterol (Direct)
Heart-Type Fatty Acid Binding Protein (H-FABP)
Homocysteine
IgA
IgE
IgG
IgM
Iron
Lactate
Lactate Dehydrogenase (L-P)
Lactate Dehydrogenase (P-L)
Lactic Acid*
LAP (Leucine Arylamidase)
LDL Cholesterol (Direct)
Lipase
Lipoprotein (a)
Lithium
Magnesium
Malic Acid*
Methadone

Methamphetamines
Microalbumin
Myoglobin
NEFA (Non-Esterified Fatty Acids)
Opiates
Pancreatic Amylase
Phenobarbitol
Phenytoin
Phosphorus (Inorganic)
Potassium (Direct & Non-Direct)
Primary Amino Nitrogen (NOPA)*
Rheumatoid Factor
Salicylate
sLDL
Sodium (Direct & Non-Direct)
Superoxide Dismutase (Ransod)
Theophylline
TIBC
Total Antioxidant Status
Total Protein
Total Sulphite (TSO₂)*
Transferrin
Transthyretin (Prealbumin)
Triglycerides
TxB Cardio
Urea
Uric Acid
Urinary Protein
Valproic Acid
Zinc

*Suitable for wine or food testing only



Australia

Randox (Australia) Pty Ltd.
Tel: +61 (0) 2 9615 4640



Brazil

Randox Brasil Ltda.
Tel: +55 11 5181-2024



China

Randox Laboratories Ltd.
Tel: +86 021 6288 6240



Czech Republic

Randox Laboratories S.R.O.
Tel: +420 2 1115 1661



France

Laboratoires Randox
Tel: +33 (0) 130 18 96 80



Germany

Randox Laboratories GmbH
Tel: +49 (0) 2151/93 706-11



Hong Kong

Randox Laboratories Hong Kong Limited
Tel: +852 3595 0515



Italy

Randox Laboratories Ltd.
Tel: +39 06 9896 8954



India

Randox Laboratories India Pvt Ltd.
Tel: +91 22 6714 0600



Poland

Randox Laboratories Polska Sp. z o.o.
Tel: +48 22 862 1080



Portugal

Irladox Laboratorios Quimica Analitica Ltda
Tel: +351 22 589 8320



Puerto Rico

Clinical Diagnostics of Puerto Rico, LLC
Tel: +1 787 701 7000



Republic of Ireland

Randox Teoranta
Tel: +353 7495 22600



Slovakia

Randox S.R.O.
Tel: +421 2 6381 3324



South Africa

Randox Laboratories SA (Pty) Ltd.
Tel: +27 (0) 11 312 3590



South Korea

Randox Korea
Tel: +82 (0) 31 478 3121



Spain

Laboratorios Randox S.L.
Tel: +34 93 475 09 64



Switzerland

Randox Laboratories Ltd. (Switzerland)
Tel: +41 41 810 48 89



USA

Randox Laboratories-US, Ltd.
Tel: +1 304 728 2890



Vietnam

Randox Laboratories Ltd.Vietnam
Tel: +84-8-39 11 09 04

